

71 and 101 SE 29th Terrace

Lee's Summit, Missouri



Flex Space for Sale or Lease

- ◆ Two newly developed flex buildings
- ◆ 5,000 to 10,000 (±) sf available for lease
- ◆ Great access off of M-291 Hwy
- ◆ 16'-18' clear height, 12' drive-in door, 3-phase power
- ◆ Growing development area
- ◆ Located just south of The Grove, a new 1.3 million sf, \$220 million mixed-use project
- ◆ Lease rate at \$9.50/sf plus \$2.55/sf NNN
- ◆ 71 SE 29th Terr. offered at \$1.4 million half of space occupied
- ◆ 101 SE 29th Terr. offered at \$1.25 million

Exclusive Property Listing

Michael L. VanBuskirk, SIOR, CCIM, CRE 816.512.1010 mvanbuskirk@ngzimmer.com

Justin A. Beal 816.268.4241 jbeal@ngzimmer.com

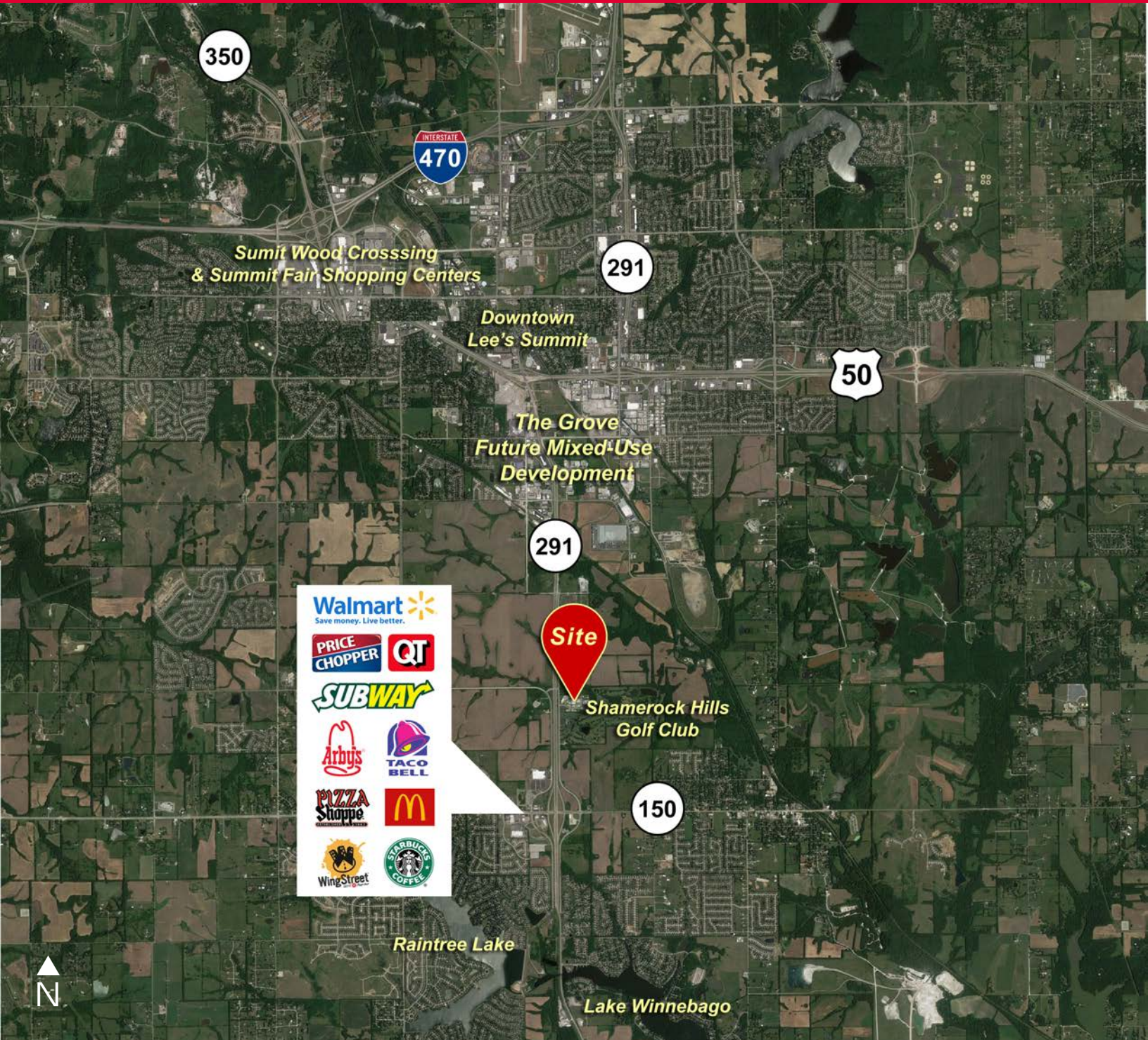
Philip J. Botana 816.512.1008 pbotana@ngzimmer.com



Procuring broker shall only be entitled to a commission calculated in accordance with the rates approved by our principal only if such procuring broker executes a brokerage agreement acceptable to us and our principal and the conditions as set forth in the brokerage agreement are fully and unconditionally satisfied. Although all information furnished regarding property for sale, rental, or financing is from sources deemed reliable, such information has not been verified and no express representation is made nor is any to be implied as to the accuracy thereof and it is submitted subject to errors, omissions, change of price, rental or other conditions, prior sale, lease or financing, or withdrawal without notice and to any special conditions imposed by our principal.

71 and 101 SE 29th Terrace

Lee's Summit, Missouri



Exclusive Property Listing

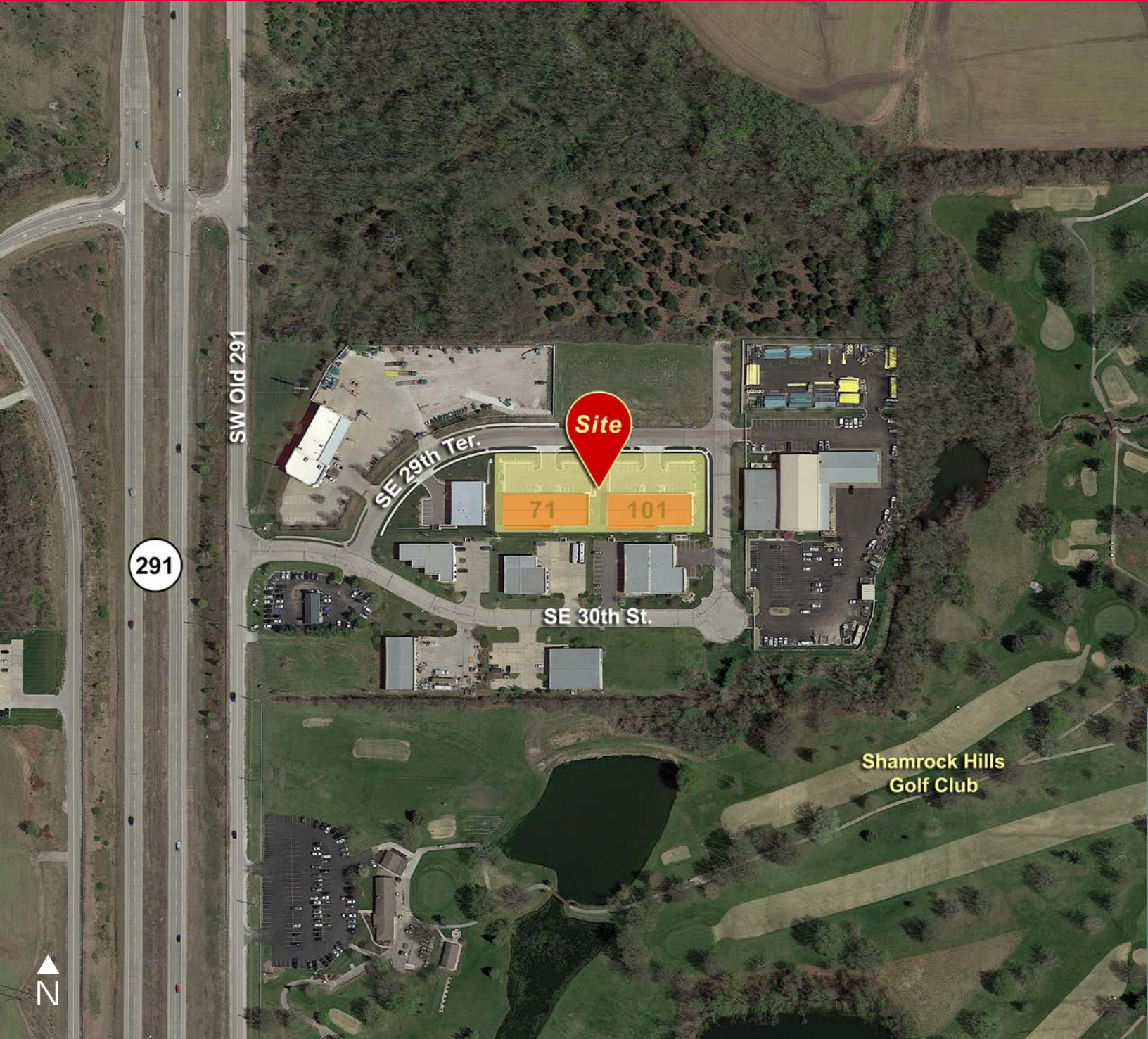
Michael L. VanBuskirk, SIOR, CCIM, CRE 816.512.1010 mvanbuskirk@ngzimmer.com

Justin A. Beal 816.268.4241 jbeal@ngzimmer.com

Philip J. Botana 816.512.1008 pbotana@ngzimmer.com

71 and 101 SE 29th Terrace

Lee's Summit, Missouri



Exclusive Property Listing

Michael L. VanBuskirk, SIOR, CCIM, CRE 816.512.1010 mvanbuskirk@ngzimmer.com

Justin A. Beal 816.268.4241 jbeal@ngzimmer.com

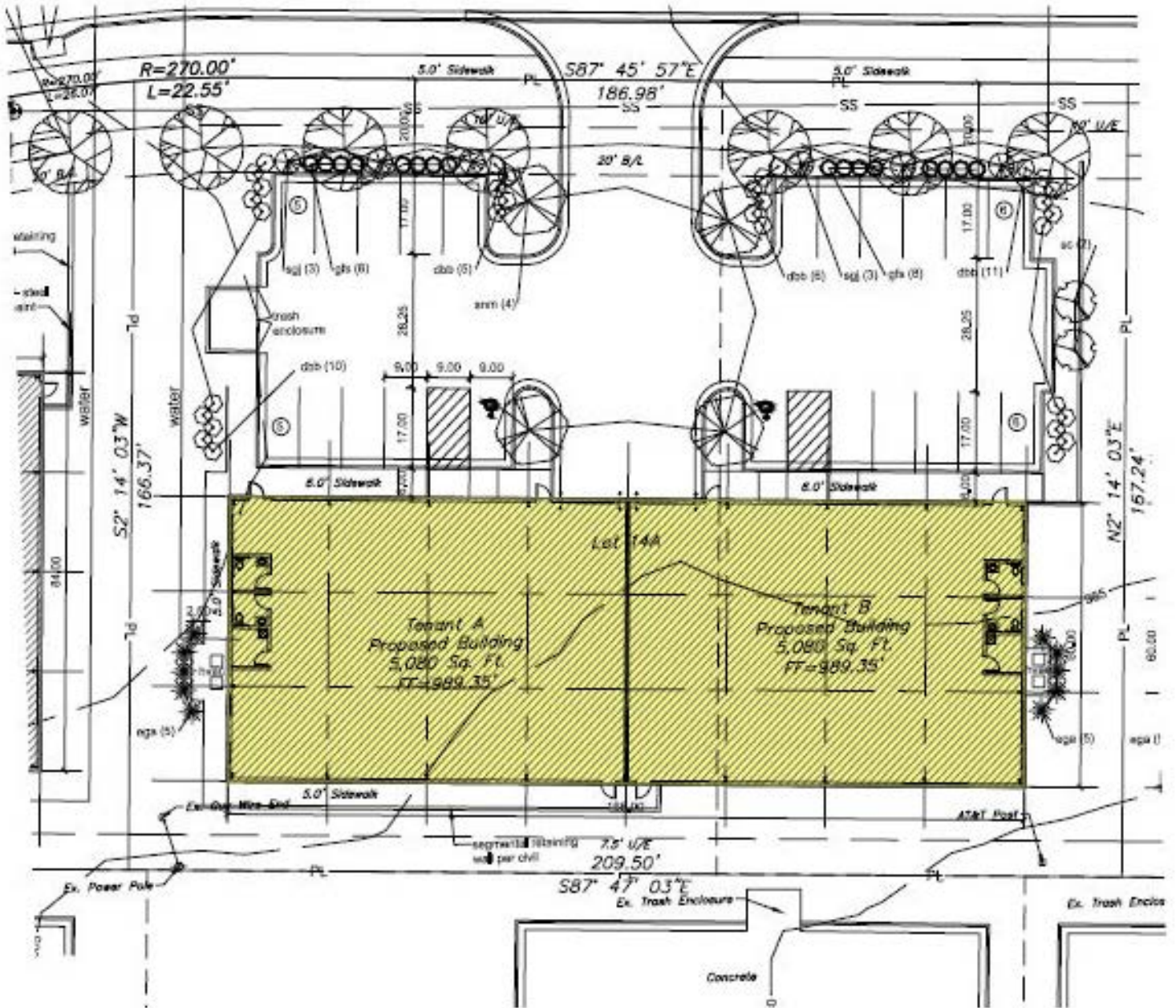
Philip J. Botana 816.512.1008 pbotana@ngzimmer.com

 **Newmark Grubb**
Zimmer

71 and 101 SE 29th Terrace

Lee's Summit, Missouri

Site Plan:



Exclusive Property Listing

Michael L. VanBuskirk, SIOR, CCIM, CRE 816.512.1010 mvanbuskirk@ngzimmer.com

Justin A. Beal 816.268.4241 jbeal@ngzimmer.com

Philip J. Botana 816.512.1008 pbotana@ngzimmer.com